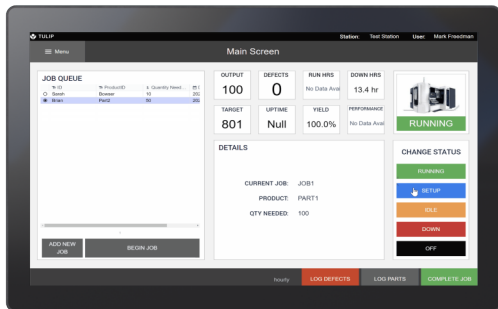




ADM-2121BP

21.5-inch VESA Mount Projected Capacitive Touch Display



Features

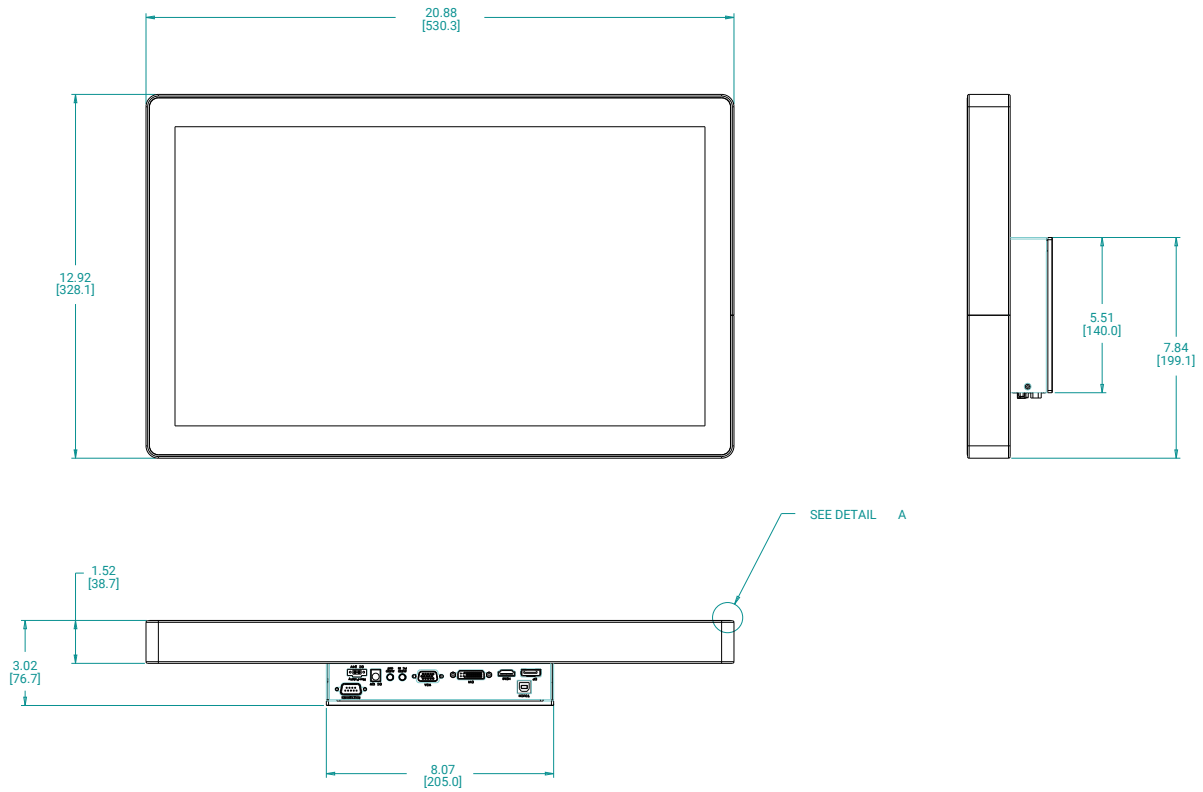
- 21.5" LCD, 1920 x 1080 Resolution
- Flush Bezel Design
- Projected Capacitive Touch
- USB Touch Interface
- VGA / DVI / HDMI / DP Input
- Available HDMI 100 meters extender option
- Enclosure meets NEMA IP50 requirements
- VESA Mount, Optional Wall Mount Bracket
- 24V DC Input or Powered by Transmitter

Specifications

Model Name	ADM-2121BP
LCD Display	
Display Size (Diagonal)	21.5"
Max Resolution	1920 x 1080
Backlight Lifetime (Hours)	50,000 hours
Visual Characteristics	
Colors	16.7 million
Aspect Ratio	16:9
Viewing Angle (V/H)	178° / 178°
Contrast Ratio	1000:1
Brightness	250 nits
Input Interface	
VGA	Yes
DVI	Yes
HDMI	Yes
Display Port	Yes
CVBS	N/A
YPbPr	N/A
Touchscreen	
Technology	Projected Capacitive
Interface	USB
Driver	Win 7, Win10
Enclosure	
Type	Metallic Housing
Color	Black
Power/Thermal Specs	
Power Requirement (Max)	24VDC / 0.93A or Powered by Transmitter
Power Consumption (Max)	23 W
Recommended Power Supply	32 W
Heat Dissipation	77 BTU/hr
Physical Information	
Mounting	VESA Mount
Net Weight	17.90 Lbs / 8.12 Kg
Dimension (W x H x D)	20.88 x 12.92 x 3.02 inch
Recommended Cutout Dimension (WxH)	530.3 x 328.1 x 76.7 mm
Environmental	
Operating Temperature	0°C to 50°C (32°F to 122°F)
Storage Temperature	-20°C to 60°C (-4°F to 140°F)
Humidity	5% to 95% non-condensing
Rating	Meets IP50
Certification	N/A

Dimension Drawing

Model Name: ADM-2121BP
 Size Unit: inch(mm)



Ordering Information

Item	ADM-2121BP-001	ADM-2121BP-00A
LCD Display	21.5" LCD / 1920 x 1080	21.5" LCD / 1920 x 1080
Touch Screen	PCAP	PCAP
Mounting	VESA MOUNT	VESA MOUNT
Enclosure	Black	Black
Extender Video Input	N/A	HDMI via KVM Extender
Power Supply	110/220VAC Input	Powered by KVM Extender